

# ASSEMBLY INSTRUCTIONS FOR INCANDESCENT RLM WITH OC BOX MOUNTING ADAPTER

- 1) PLACE FACTORY PRE-ASSEMBLED SOCKET INTO REFLECTOR (REFER TO DRAWING FOR GASKET, OC ADAPTER PLATE PLACEMENT).
- 2) TIGHTEN NUT ONTO FLANGE.
- 3) ATTACH FIXTURE TO STANDARD 4" CEILING BOX

CAST ZINC NUT  
No. Z-C-91

TYPICAL RLM  
REFLECTOR

WIRE LEADS

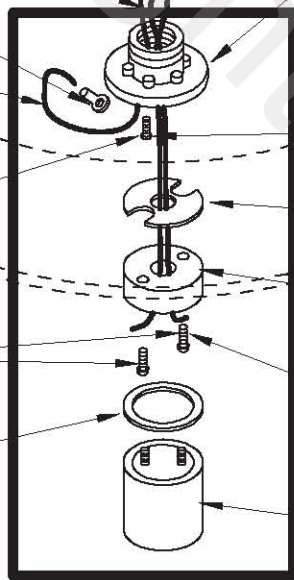
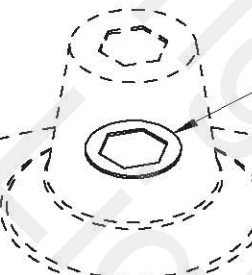
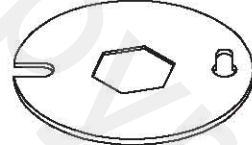
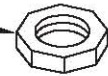
GROUND EYELET  
PART No. Z-E 97

GREEN GROUND  
LEAD WIRE

8-32 X 1/4" GREEN GROUND  
SCREW PAN HEAD SLOTTED  
PART No. Z-F SCR 36-2

8-32 X 3/8" ROUND HEAD  
SLOTTED SOCKET SCREWS  
No. Z-F-SCR 36-1

FIBER RING GASKET  
No. Z-G-17



FIBER GASKET  
No. Z-G-10

No. OC BOX MOUNTING  
ADAPTER FOR RLM REFLECTOR

FIBER GASKET  
No. Z-G-10

CAST ZINC MOUNTING FLANGE  
No. Z-C-93 (1/2" THREADS) OR  
No. Z-C-147 (3/4" THREADS)

LOCKTITE

FIBER GASKET DISK  
No. Z-G-25

TOP PORTION OF PORCELAIN  
SOCKET PART No. Z-SK 8  
WITH SCREW TERMINALS

LOCKTITE

BOTTOM PORTION OF SOCKET  
WITH INTEGRAL SCREWS

FACTORY PRE-ASSEMBLED  
SOCKET