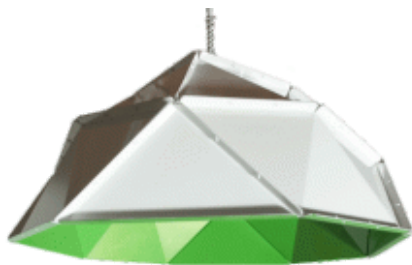


# GEODESIC DOME

Pendant



A

CONCEPT

B

FINISH

C

LAMP TYPE

D

DRIVER  
CANOPY

A

## CONCEPT

**Reflector:** Aluminum Panels formed to geodesic design

**T82-20** - 20" Geodesic Dome

**T82-30** - 30" Geodesic Dome

**T82-40** - 40" Geodesic Dome

# GEODESIC DOME

Pendant

## **B** FINISH

IN = iXX  
EXT = eXX

### T82-20

20° Geodesic  
Dome

### T82-30

30° Geodesic  
Dome

### T82-40

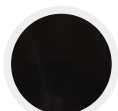
40° Geodesic  
Dome

## Powder Coat Finishes



**GXX**

To be determined.



**G0**

Black



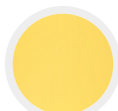
**G1**

White



**G2**

Red



**G3**

Yellow



**G4**

Blue



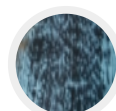
**G5**

Green



**G6**

Brown



**G7**

Verdigris



**G8**

Dark Bronze



**G9**

Silver



**G10**

Dark Green



**G11**

Copper



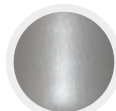
**G12**

Brushed  
Aluminum



**G13**

Tan



**G14**

Gunmetal



**G15**

Rust



**G16**

Silver Wrinkle



**G17**

Architectural  
Bronze



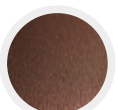
**G18**

Rock Garden  
Green



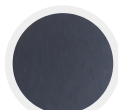
**G20**

Silver Cast



**G21**

Hammered  
Copper



**G22**

Dark Platinum



**G23**

Silver Camera



**G24**

Orange



**G25**

Navy Blue



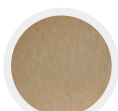
**G26**

Chrome



**G27**

Matte Black



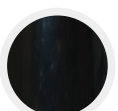
**G28**

Sun Gold



**G29**

Brilliant Blue



**G30**

Mirror Black



**G50**

Neon Orange



**G51**

Neon Pink



**G52**

Neon Yellow



**G53**

Lime Green Neon

# GEODESIC DOME

Pendant



## LAMP TYPE

### Sockets for Decorative

**MED** Medium Base Socket,  
E26

### LVGV1

**LVGV1-1250-XXK** LVGV1 -  
1250LM

**LVGV1-1500-XXK** LVGV1 -  
1500LM

**LVGV1-1700-XXK** LVGV1 -  
1700LM

### LAC01


*Available with either 30/40K*




**LAC01-13W-XXK-120V** A/C  
LED Module, 13W, XXK,  
120V


# GEODESIC DOME

Pendant

<b>LBAC1-1</b> <i>LED: 1 x Cree CMA25, Available with either 27/30/35/40K Driver: ERP PSB Series, 120/277V, 0-10V Dimming</i>			
<b>LBAC1-1-1600-XXK</b> LBAC1 - Single Module, 1600LM, 15W	<b>LBAC1-1-1800-XXK</b> LBAC1 - Single Module, 1800LM, 17W	<b>LBAC1-1-2000-XXK</b> LBAC1 - Single Module, 2000LM, 18W	<b>LBAC1-1-2500-XXK</b> LBAC1 - Single Module, 2500LM, 23W
<b>LBAC1-1-3000-XXK</b> LBAC1 - Single Module, 3000LM, 27W	<b>LBAC1-1-4000-XXK</b> LBAC1 - Single Module, 4000LM, 36W	<b>LBAC1-1-5000-XXK</b> LBAC1 - Single Module, 5000LM, 45W	

<b>LBAC1-2</b> <i>LED: 2 x Cree CMA25, Available with either 27/30/35/40K Driver: ERP PSB Series, 120/277V, 0-10V Dimming</i>			
<b>LBAC1-2-1600-XXK</b> LBAC1 - Dual Module, 3200LM, 30W	<b>LBAC1-2-1800-XXK</b> LBAC1 - Dual Module, 3600LM, 34W	<b>LBAC1-2-2000-XXK</b> LBAC1 - Dual Module, 4000LM, 36W	<b>LBAC1-2-2500-XXK</b> LBAC1 - Dual Module, 5000LM, 46W
<b>LBAC1-2-3000-XXK</b> LBAC1 - Dual Module, 6000LM, 54W			

## D DRIVER CANOPY

<b>BDC - Small Ceiling Driver Enclosure</b> <i>Small Driver Enclosure Canopy for LED modules with small form drivers. Will work with a max of 2 PSB Drivers or 1 Lutron driver. 30W Max per driver. Accepts cord, 1/2-NPT stem, 3/4-NPT stem, single aircraft cable, or three aircraft cables. <b>Dimensions:</b> OD 5.5in x 2in</i>			
<b>BDC6C-10FT</b> BDC Style Driver Enclosure with 10ft Cord	<b>BDC6C-20FT</b> BDC Style Driver Enclosure with 10ft Cord	<b>BDC6S-75</b> BDC Style Driver Enclosure for 3/4-NPT Stem	<b>BDC6S-50</b> BDC Style Driver Enclosure for 1/2-NPT Stem
<b>BDC6C1A-10FT</b> BDC Style Driver Enclosure with 1 Aircraft Cable & 10ft Cord.	<b>BDC6C1A-20FT</b> BDC Style Driver Enclosure with 1 Aircraft Cable & 20ft Cord.	<b>BDC6C3A-10FT</b> BDC Style Driver Enclosure with 3 Aircraft Cable & 10ft Cord.	<b>BDC6C3A-20FT</b> BDC Style Driver Enclosure with 3 Aircraft Cable & 20ft Cord.